



# STEVE GOUGH

---

NEW WORK 2022



*Outstation*  
art from art centres



OUTSTATION GALLERY PRESENTS

# STEVE GOUGH

---

## NEW WORK 2022

OPENING FRIDAY 14 OCTOBER AT 5.30PM  
SHOWING 15 - 29 OCTOBER

IMAGES:

COVER: SG32 *after the Storm (detail)*  
LEFT: Miniature classical landscape 2;  
Group of Brolgas *(detail)*

8 Parap Place, Parap  
Northern Territory 0820

P 08 8981 4822

M 0488 564 952

E [info@outstation.com.au](mailto:info@outstation.com.au)

W [www.outstation.com.au](http://www.outstation.com.au)

Director Matt Ward

**Outstation**  
art from art centres

**Petite. Precise. Perfect.**

It is wonderful to have Steve Gough's miniature landscapes back in the gallery for his sixth solo show with Outstation.

In 'New Works 2022' we see our familiar Top End landscape through a gentle European, and at times Japanese, aesthetic. Even when danger threatens, in the form of a lurking crocodile or a sinuous python, there is an undeniable tranquillity to these captured moments.

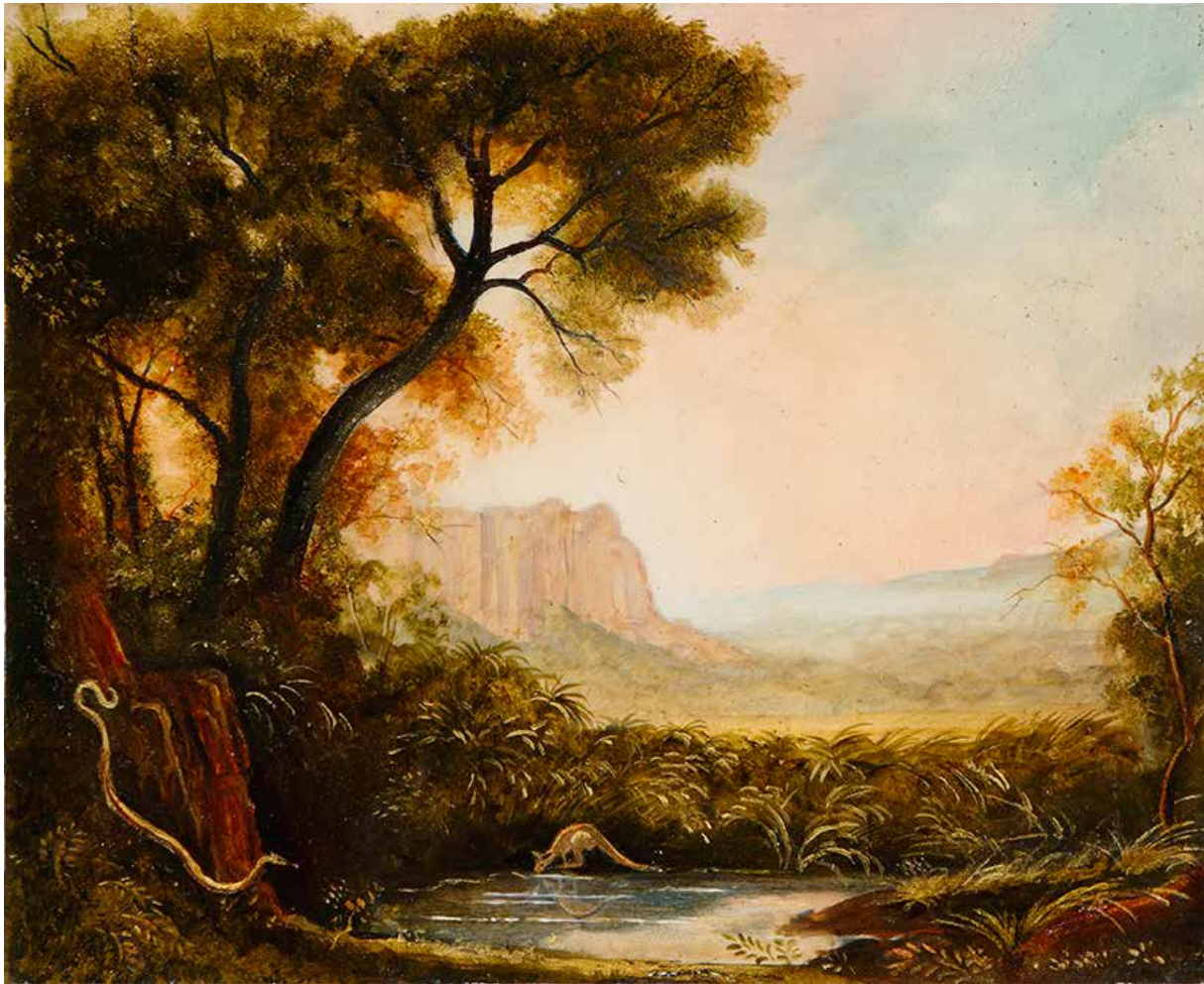
A master of light, Gough's oils are intimate and romantic, evoking an unlikely Arcadia filled with cycads and woolybutts. His attention to detail and the refined elegance of his brushwork is utterly captivating.

It is, as always, beautiful.



*Venus Rising*  
2021  
Oil on Board  
18 x 18 cm  
SG1-22

SOLD



*Miniature classical landscape 1; Python & Wallaby*  
2021  
Oil on Board  
19 x 16 cm  
SG2-22

\$700



*Miniature classical landscape 2; Group of Brolgas*  
2022  
Oil on Board  
17 x 16 cm  
SG3-22

\$600



*Miniature classical landscape 3; Mortal Danger*

Oil on Board

22 x 13 cm

SG4-22

SOLD



*Miniature classical landscape 4; Pair of Brolgas*  
Oil on Board  
19 x 12 cm  
SG5-22

\$550





*Fight in the Night*  
Oil on board with gold leaf  
23 x 15 cm  
SG6-22

\$800



*Sunset Billabong*  
Oil on board with gold leaf  
16 x 15 cm  
SG7-22

SOLD



*Watchful Trio (detail of #23 Magpie Goose Roost)*  
Oil on board  
17 x 15 cm  
SG8-22

\$600



*Cycads: Conjunction of Planets*  
Oil on board with gold leaf  
15 x 18 cm  
SG9-22

SOLD



*Gouldian Finches with Lotus (detail of #14 The Seasons)*  
Oil on board  
27 x 16 cm  
SG10-22

\$850



*Lotus with Frog*  
Oil on board  
16 x 20 cm  
SG11-22

\$700



*Stringybark Sunrise*  
2022  
Oli on board  
15 x 17 cm  
SG12-22

SOLD



*Poised for Flight*  
2022  
Oil on board with gold leaf  
17 x 15 cm  
SG13-22

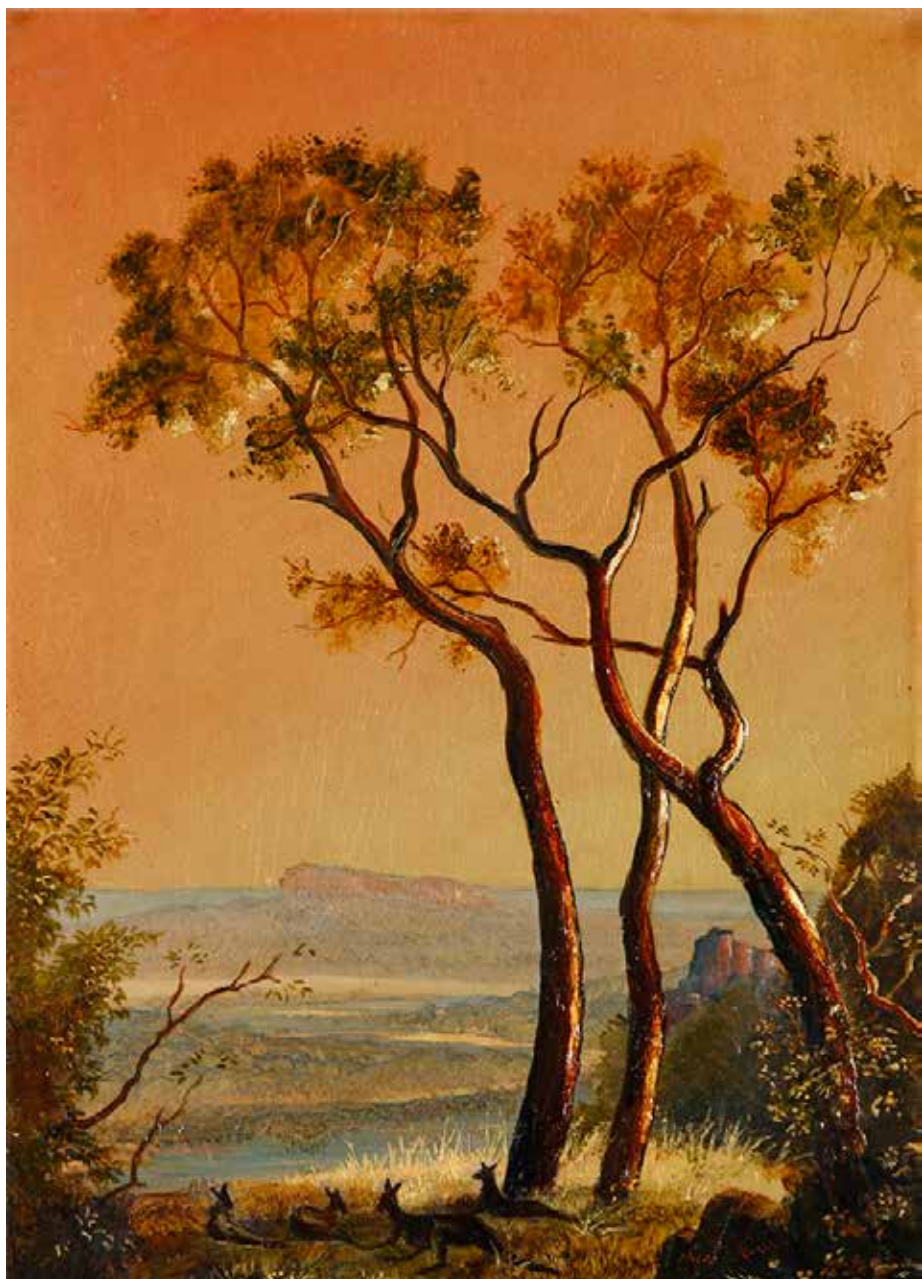
\$600





*The Seasons*  
2022  
Oil on board  
114 x 30 cm (6 panels)  
SG14-22

\$3300 (RESERVED)



*Shade*  
2022  
Oil on board with gold leaf  
18 x 26 cm  
SG15-22

SOLD



*Morning Haze*  
2022  
Oil on board  
37 x 18 cm  
SG16-22

\$1100



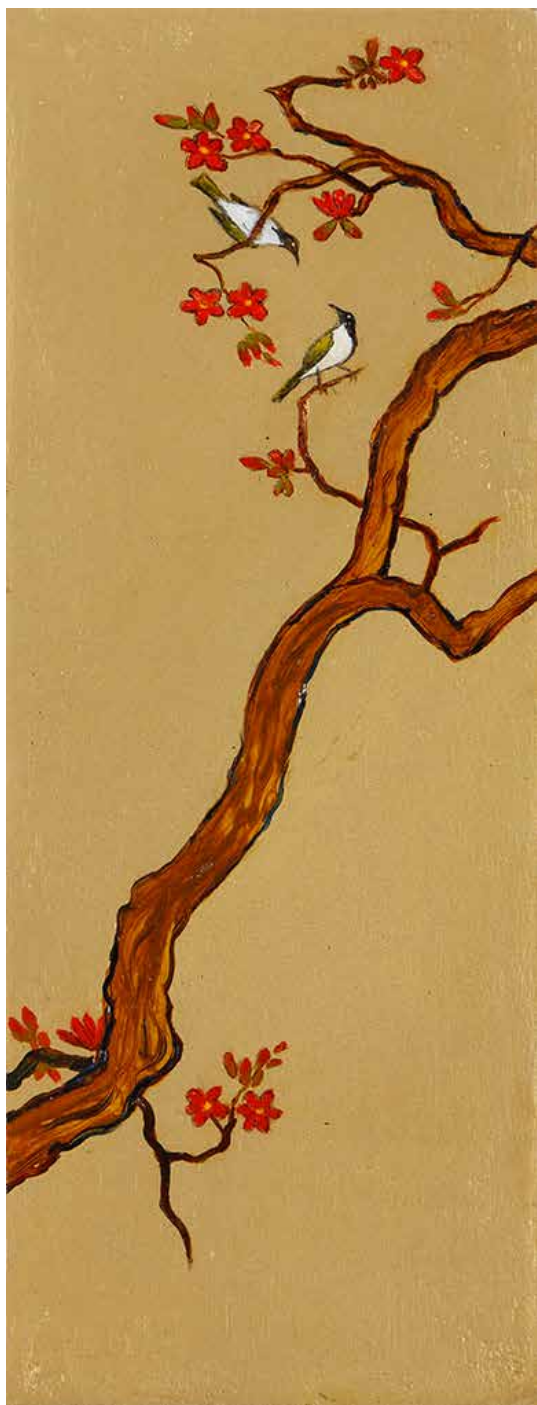
*Alone*  
2022  
Oil on board with gold leaf  
37 x 20 cm  
SG17-22

SOLD



*On the Move*  
2022  
Oil on board with gold leaf  
34 x 12 cm  
SG18-22

SOLD



*Kurrajong with White-Throated Honeyeaters*  
2022  
Oil on board with gold leaf  
10 x 24 cm  
SG19-22

\$550



*Blue-Faced Honeyeaters (detail of #14 The Seasons)*  
2022  
Oil on board  
17 x 15 cm  
SG20-22

\$600



*Wet Season Woodland*  
2022  
Oil on board  
33 x 49 cm  
SG21-22

\$2000





*Wet Season Woodland Approaching*  
2022  
Oil on board with gold leaf  
44 x 51 cm  
SG22-22

\$2800



*Magpie Goose Roost*  
2022  
Oil on board with gold leaf  
36 x 52 cm  
SG23-22

\$2600



*Prey*  
2022  
Oil on board with gold leaf  
90 x 33 cm  
SG24-22

\$3300



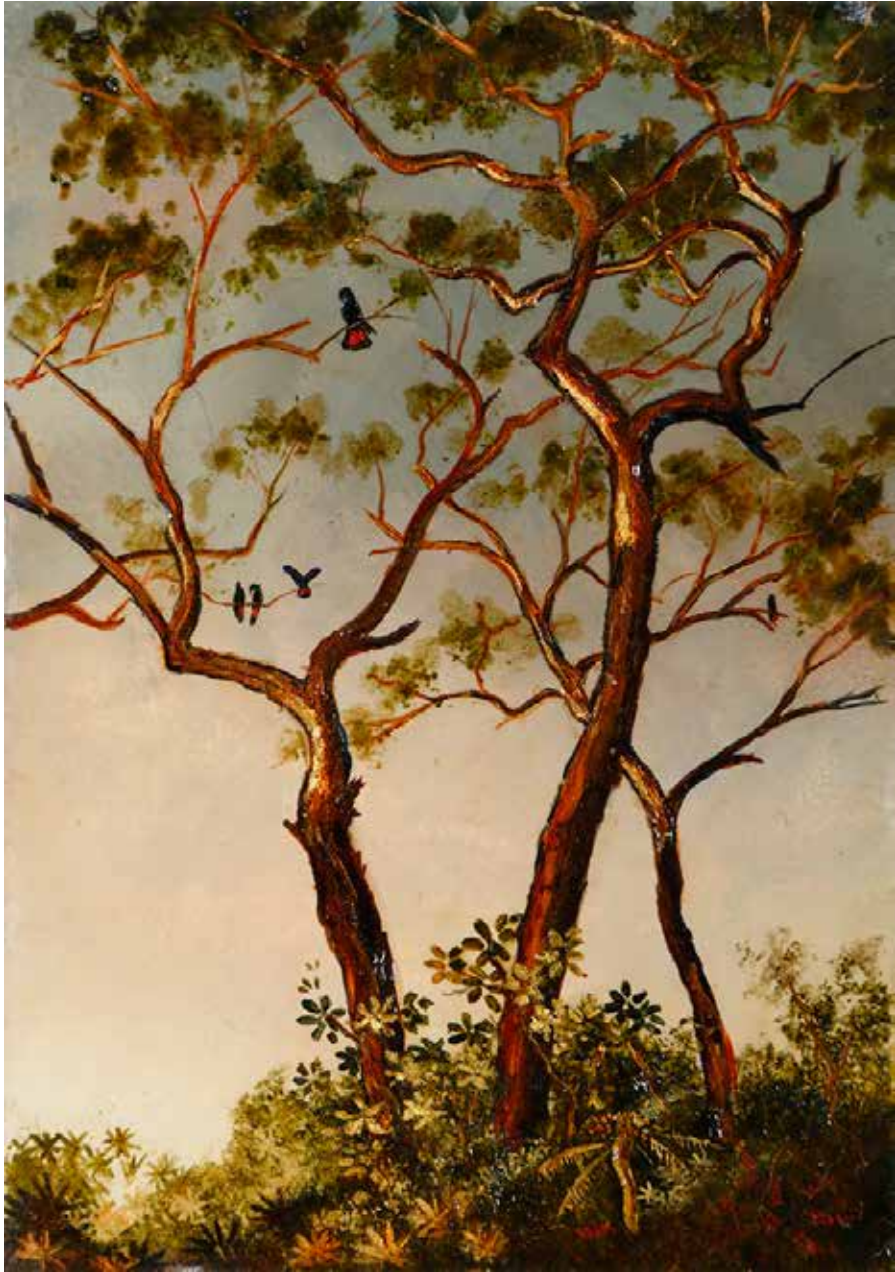
*Black Red-Tailed Cockatoos*  
2022  
Oil on board with gold leaf  
76 x 20 cm  
SG25-22

\$2000



*Magpie Goose Ridge*  
2022  
Oil on board with gold leaf  
110 x 41 cm  
SG26-22

SOLD



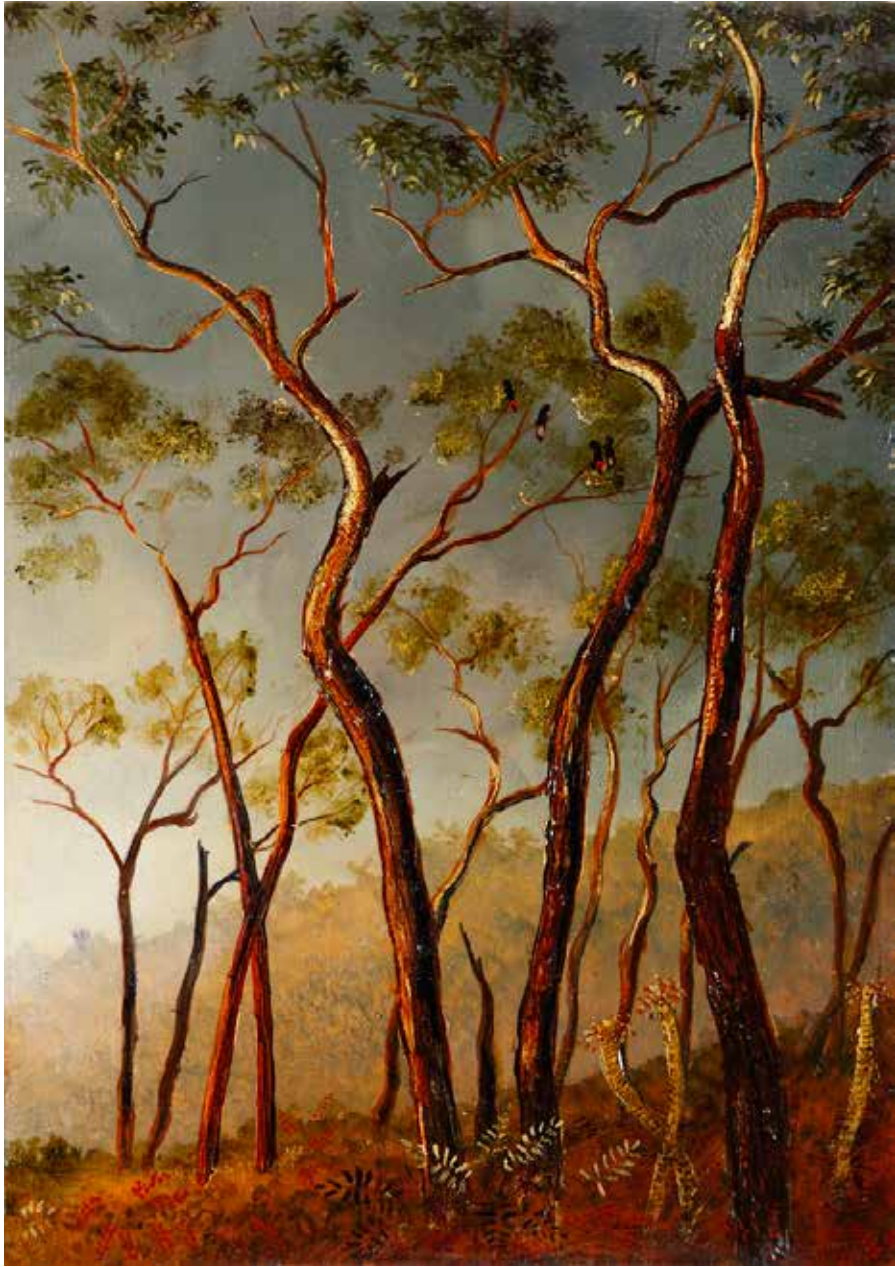
*Cockatoos in Woollybutts*  
2022  
Oil on board with gold leaf  
14 x 20 cm  
SG27-22

\$700



*Coucals*  
2022  
Oil on board with gold leaf  
30 x 17 cm  
SG28-22

\$950



*Woodlands*  
2022  
Oil on board with gold leaf  
22 x 13 cm  
SG29-22

\$800





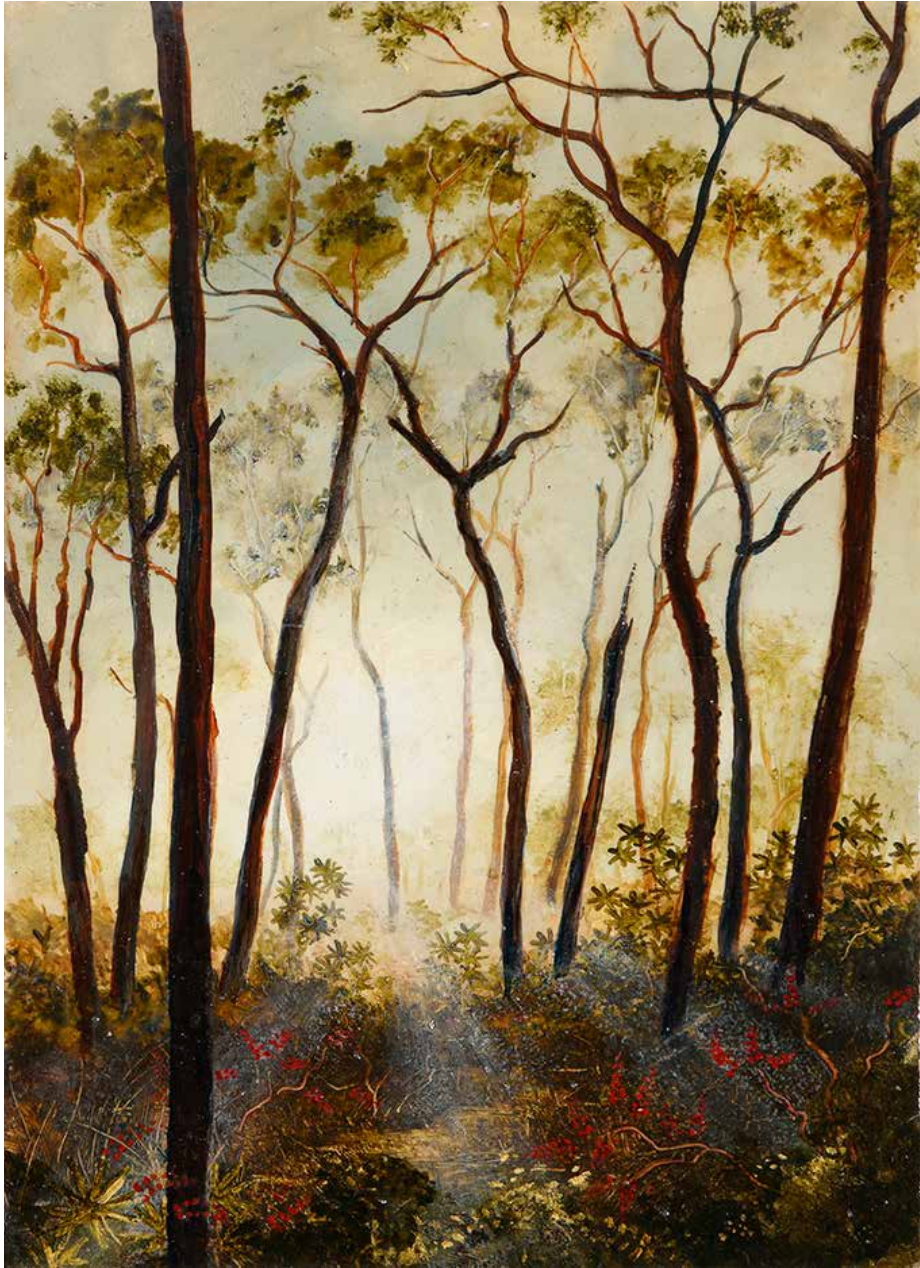
*Venus through the Woollybutts*  
2022  
Oil on board with gold leaf  
15 x 21 cm  
SG30-22

\$800



*Solitary Cockatoo*  
2022  
Oil on board  
15 x 20 cm  
SG31-22

SOLD



*After the Storm*  
2022  
Oil on board  
14 x 20 cm  
SG32-22

\$700



*Study of Flowering Woollybutt*  
2022  
Oil on board  
42 x17 cm (3 panels)  
SG33-22

\$1600



*Darwin City Skyline*  
2022  
Oil on board with gold leaf  
58 x 26 cm  
SG34-22

\$1800



*Burrungui*  
2022  
Oil on board  
200 x 50 cm  
SG35-22

SOLD



## Steve Gough

Steve Gough was born in England in 1956 and migrated to Australia in 1981 at the age of 25. He has lived in the Northern Territory since 1988.

Gough has always had a keen interest in the arts but has no formal arts training. Over the years, he has made many copies of paintings by Henri Matisse, Pablo Picasso, Amedeo Modigliani and Henri Rousseau. This includes full size replicas of Claude Lorrain's 'The Death of Procris' and 'Hagar and the Angel.' Something of an obsession with Lorrain followed, as Gough long struggled to reconcile the 17th century European aesthetic with 21st century Australia in his art practice.

Other influences include the English landscape painters J M W Turner and Richard Wilson, as well as John Glover. More recently, Gough has been influenced by Korean and

Japanese art in his paintings. In particular, this has included the narrative screens of the Rinpa school.

Gough has had works included in the annual 'Off Cuts' exhibition at Don Whyte Framing in Darwin over the last few years and exhibited with Matthew Mainsbridge in 'Small is Beautiful' at Outstation Gallery in 2014. His first solo exhibition titled 'Woodlands: Strange Beauty' was held at Outstation Gallery in November 2015, in which a series of oil paintings on board and oil paintings incorporating gold leaf on board were shown. He has exhibited at Outstation Gallery every year since. He was a finalist in the prestigious Wynne Prize in 2016.

When not working in the studio, Gough's interests include early 20th century American popular music, and playing the piano. He resides in Darwin River with his family.

## Solo Exhibitions:

- 2020** – Open Spaces – Outstation Gallery
- 2018** – Night and Day - Outstation Gallery
- 2017** – A View From The Bush - Outstation Gallery
- 2016** – Woodland: New paintings by Steve Gough - Outstation Gallery
- 2015** – Woodlands, Strange Beauty – Outstation Gallery

## Group Exhibitions:

- 2020** – Salon des Refusés – S.H. Ervin Gallery
- 2018** – **2019** - Fecund: Fertile Worlds, Araluen Arts Centre, Alice Springs
- 2018** - Fecund: Fertile Worlds, Godinymayin Yijard Rivers Arts and Cultural Centre, Katherine
- 2018** – Fecund: Fertile Worlds, NCCA – Northern Centre for Contemporary Art, Darwin
- 2016/2017** – Our Feathered Friends... the art of birds, CDU Art Gallery
- 2016** – Wynne Prize – Art Gallery of New South Wales
- 2014** – Still Life and Landscape: Matthew Mainsbridge and Steve Gough – Outstation Gallery

## Collections:

- CDU Art Gallery
- Museum and Art Gallery of the Northern Territory



For further information or to see high resolution images please contact the gallery.  
All rights reserved. Artwork copyright © the photographers and artists.