



ARRARANTENH,  
ARNWEKETY,  
AYNIKW,  
AYTEYIKW

TREE, FRUIT,  
FATHER, DAUGHTER

---

MOTORBIKE PADDY NGALE  
ELIZABETH MBITJANA



*Outstation*  
art from art centres



OUTSTATION GALLERY IS PROUD TO PRESENT

# ARRARANTENH, ARNWEKETY, AYNIKW, AYTEYIKW

TREE, FRUIT, FATHER, DAUGHTER  
IN ASSOCIATION WITH UTOPIA ART CENTRE

SHOWING SATURDAY 25 FEBRUARY - 18 MARCH 2023

IMAGES:

COVER: 5-23 ELIZABETH MBITJANA PITIJANA *Arnwekety (detail)*

LEFT: 157-22, MOTORBIKE PADDY NGALE *Arrarantenh (detail)*

8 Parap Place, Parap  
Northern Territory 0820

P 08 8981 4822

M 0488 564 952

E [info@outstation.com.au](mailto:info@outstation.com.au)

W [www.outstation.com.au](http://www.outstation.com.au)

Director Matt Ward

**Outstation**  
art from art centres

**Arrarantenh, Arnwekety,  
Aynikw, Ayteyikw  
(Tree, Fruit, Father, Daughter)**

Motorbike and Elizabeth paint one dreaming. Like arrarantenh and arnwekety they share a seed, a strong root that ties them together. One is not complete without the other. Side by side they make the story. This painting story is called Arrarantenh, Arnwekety, Aynikw, Ayteyikw or Tree, Fruit, Father, Daughter. The story of the two bush plums. One born out of the other.

All the paintings in the exhibition were created on country in Utopia. Both father and daughter live together in their Homeland of Camel Camp. Their country is Arlparra.

This show builds upon the original showing of their work last year. The work draws us into their expansive understanding of interconnectedness.

**MOTORBIKE PADDY NGALE**

Arrarantenh (bushplum). That old man's painting it. It's the same like arnwekety (bushplum) but it's the first one. Growing like a strong tree. That tree made all the rest. All the bush plums growing all over. The seeds came from that first one.

Arrarantenh. He came from down there. To the West. He coming out now. Travelling underground like black water. Black water. When it's cold in the country. That's his country. I understood with the old people. My brother, my father. He told me how he goes. "How does arrarantenh go?" Just like water he goes. In the underground. He comes out in country, that's the story. That's the country.

They said "How does he come? On top?" No, he comes from underground, just like water. Black water underneath. Not yellow or red. Comes up in our country from far away. Travelling. Growing here. Coming out in a tree, bush flower and tucker. That's the story. That's the song.

"Not arnwekety, arrarantenh. It goes back to arrarantenh mine. I might put them arrarantenh there."

**ELIZABETH MBITJANA**

That's our dreaming, only bush plum. Amern Arnwekety. Sweet ones. Kwaty (water) coming and they're growing. They start off green then cooked ones go black. You can fill them up in a billy can and eat them. Those seeds move all around the place. Anywhere in Utopia.



ELIZABETH MBITJANA



ELIZABETH MBITJANA PITIJANA  
*Annwekety*  
2022  
acrylic on linen  
51 x 76 cm  
163-22

\$1,200



ELIZABETH MBITJANA PITIJANA  
*Annwekety*  
2023  
acrylic on linen  
40 x 76 cm  
3-23

SOLD



ELIZABETH MBITJANA PITIJANA  
*Annwekety*  
2022  
acrylic on linen  
76 x 102 cm  
162-22

\$2,500



ELIZABETH MBITJANA PITIJANA  
*Annwekety*  
2022  
acrylic on linen  
76 x 102 cm  
164-22

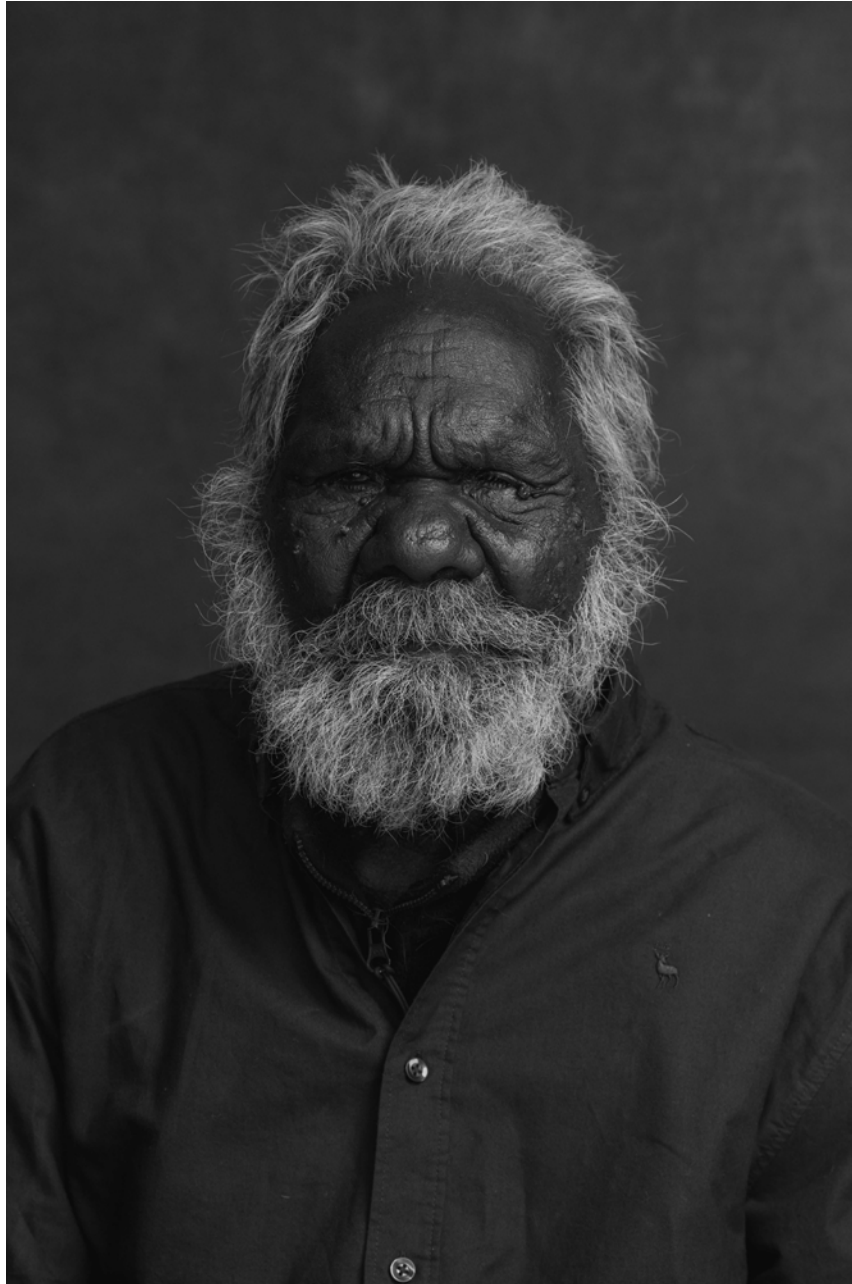
\$2,500



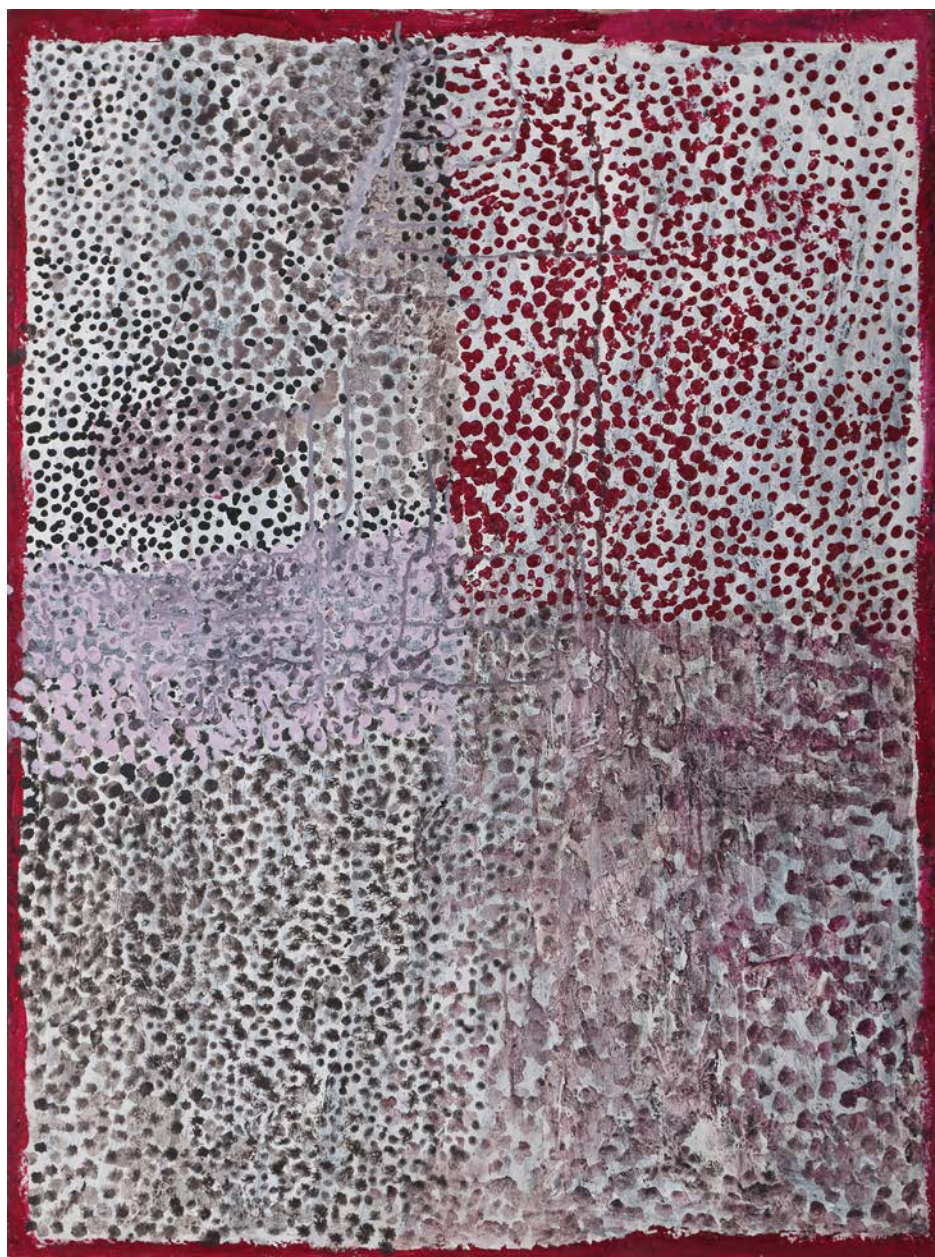


ELIZABETH MBITJANA PITIJANA  
*Arrwekety*  
2023  
acrylic on linen  
90 x 138 cm  
5-23

\$3,300



## MOTORBIKE PADDY NGALE



MOTORBIKE PADDY NGALE  
*Arrarantenh*  
2022  
acrylic on linen  
76 x 102 cm  
166-22

SOLD



MOTORBIKE PADDY NGALE  
*Arrarantenh*  
2022  
acrylic on linen  
102 x 76 cm  
161-22

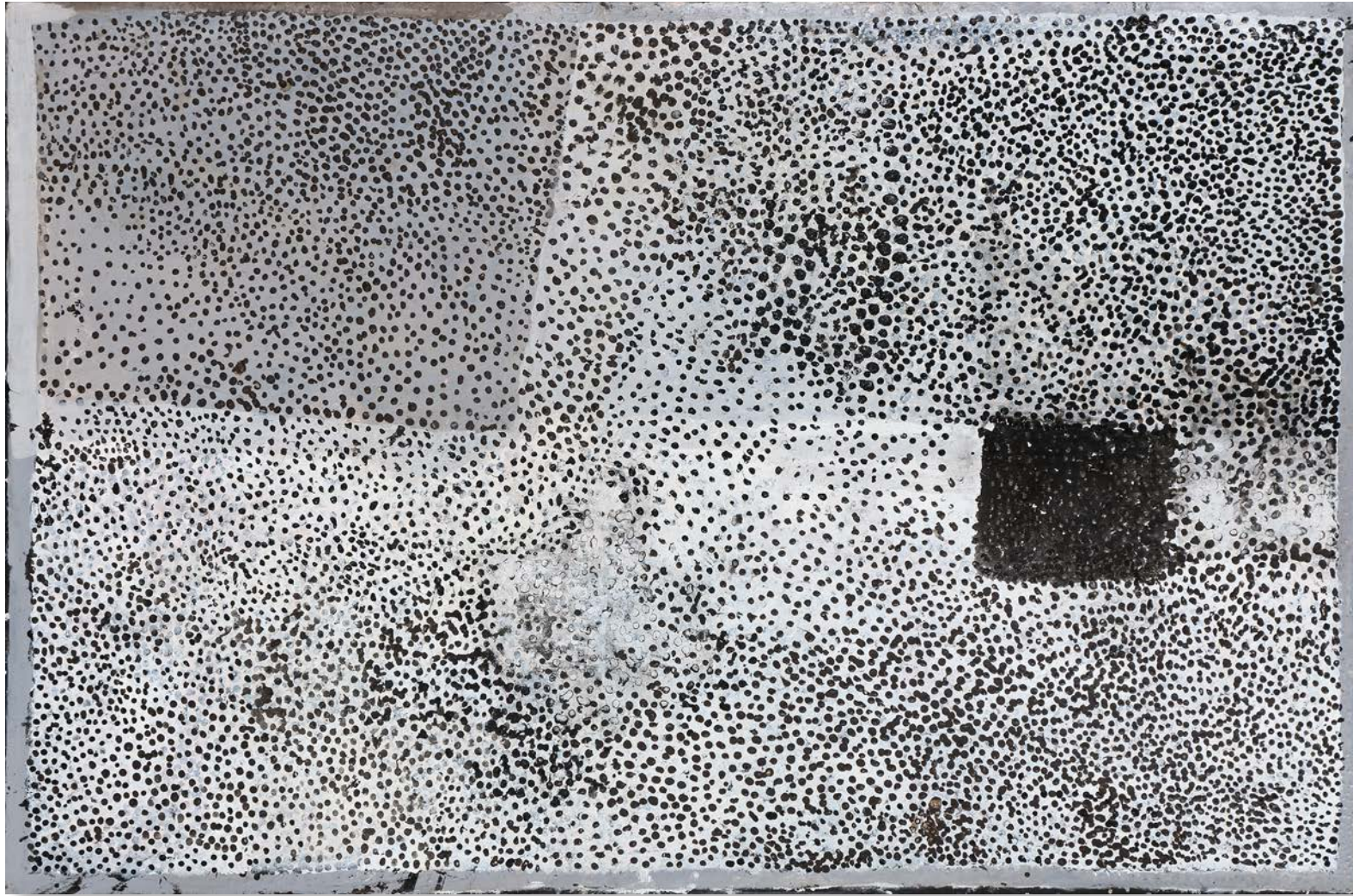
\$2,800



MOTORBIKE PADDY NGALE  
*Arrarantenh*  
2022  
acrylic on linen  
102 x 76 cm  
160-22

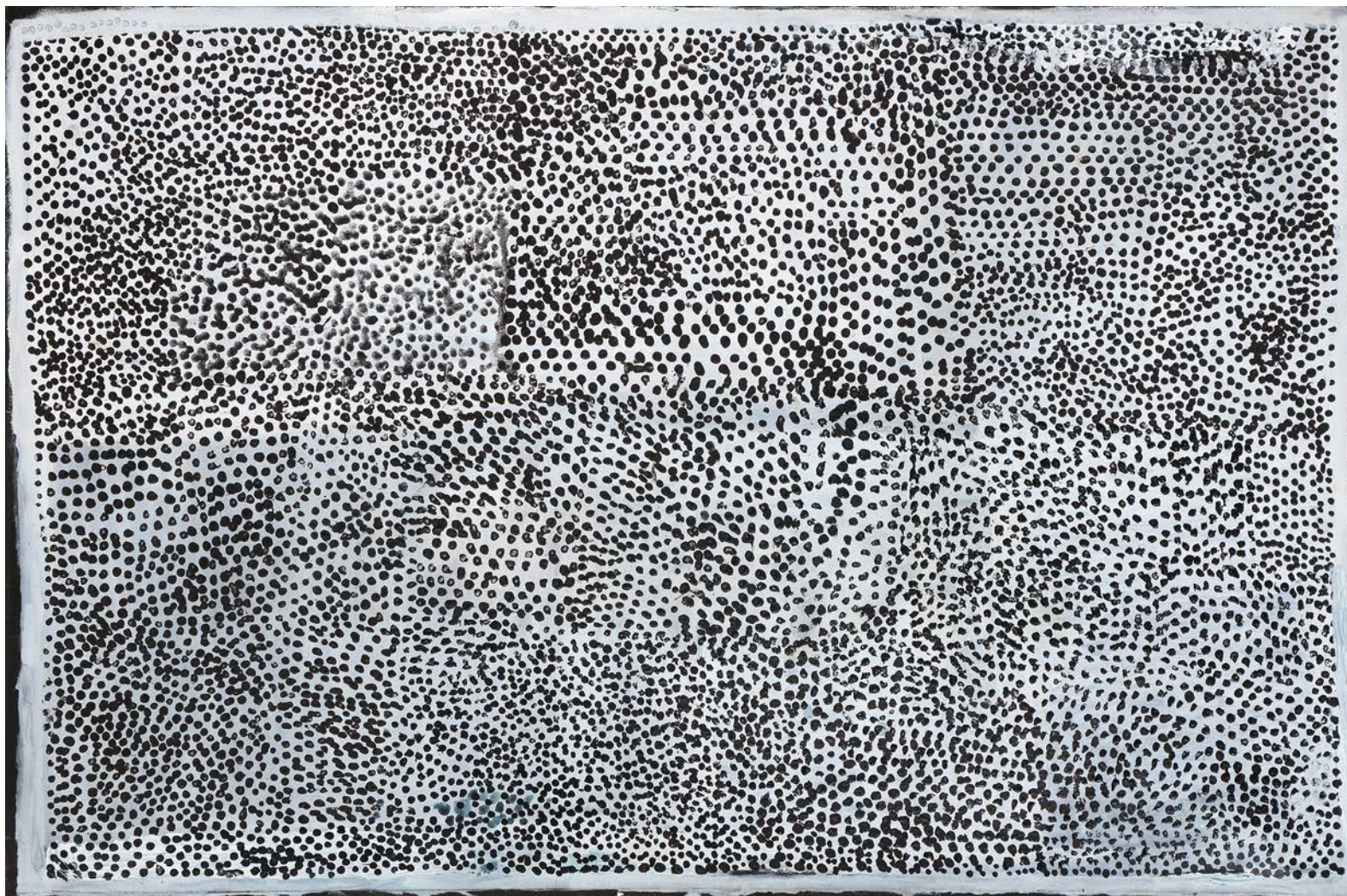
\$2,800

RESERVED



MOTORBIKE PADDY NGALE  
*Arrarantenh*  
2022  
acrylic on linen  
152 x 102 cm  
157-22

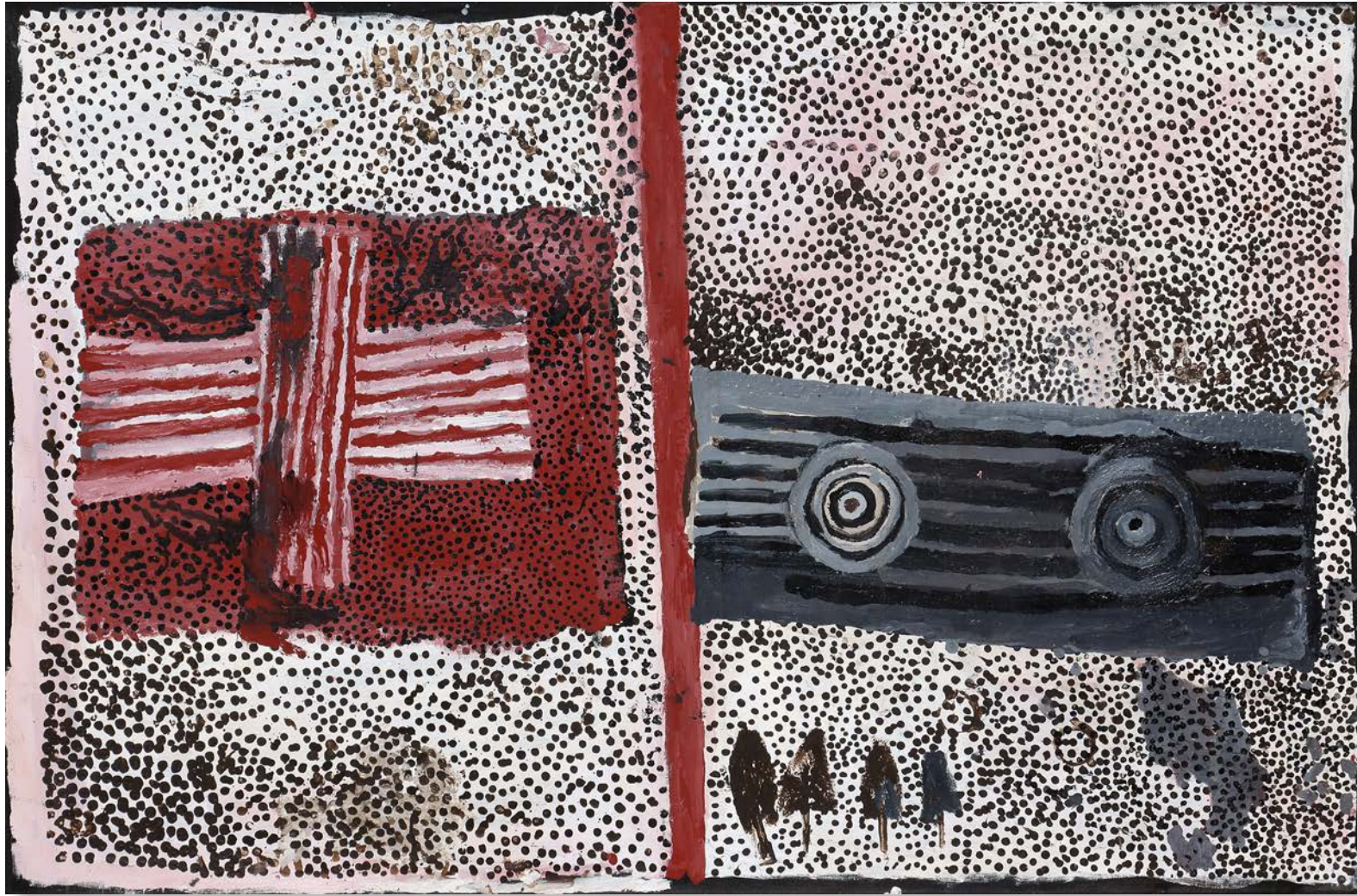
SOLD



MOTORBIKE PADDY NGALE  
*Arrarantenh*  
2022  
acrylic on linen  
152 x 102 cm  
158-22

\$4,500

RESERVED

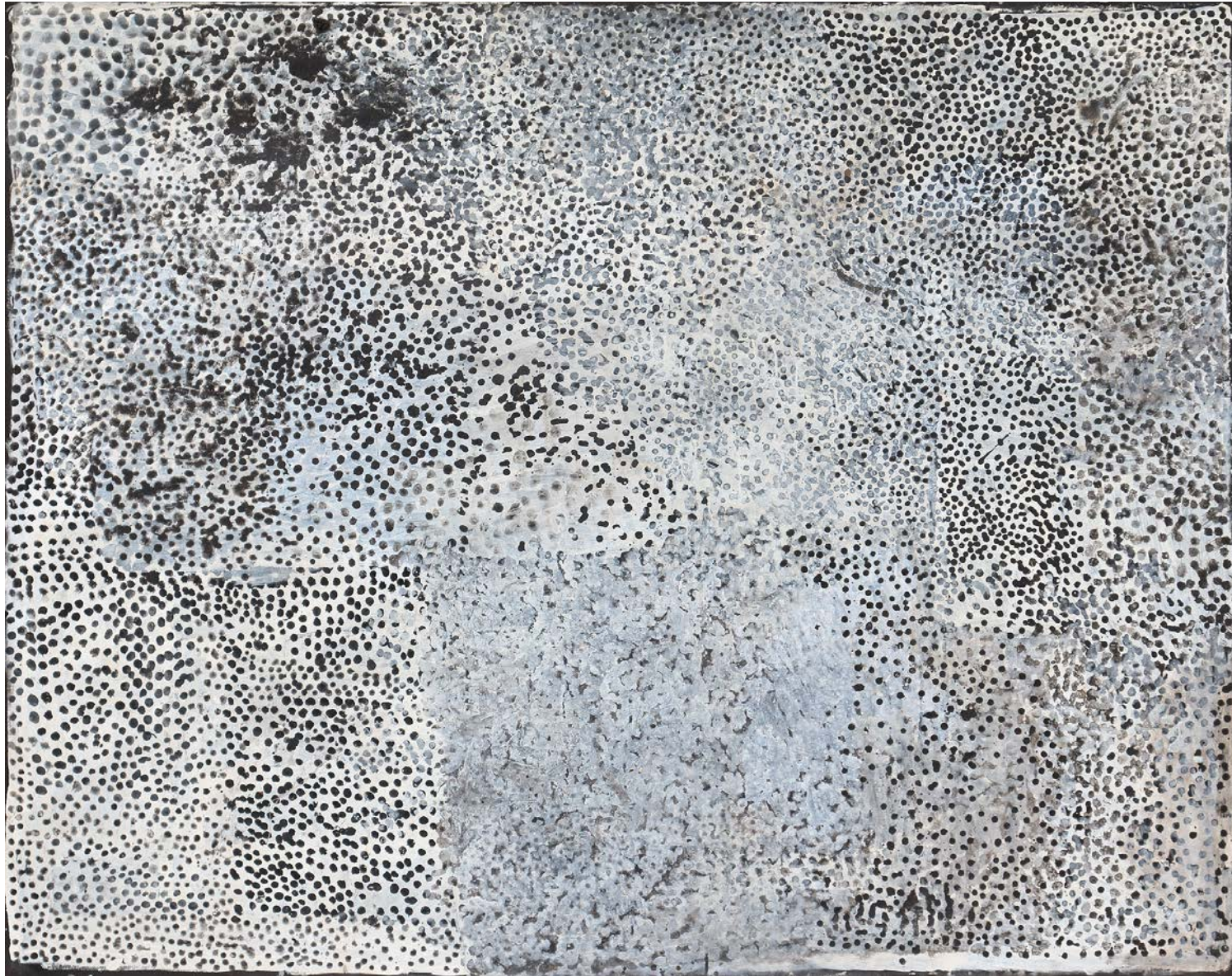


MOTORBIKE PADDY NGALE  
*Arrarantenh*  
2022  
acrylic on linen  
152 x 102 cm  
156-22

\$4,500

RESERVED





MOTORBIKE PADDY NGALE  
*Arrarantenh*  
2022  
acrylic on linen  
152 x 120 cm  
159-22

\$5,500

RESERVED



MOTORBIKE PADDY NGALE  
*Arrarantenh*  
2023  
acrylic on linen  
152 x 120 cm  
2-23

\$5,500

RESERVED



MOTORBIKE PADDY NGALE  
*Arrarantenh*  
2023  
acrylic on linen  
152 x 120 cm  
4-23

\$5,500



For further information or to see high resolution images please contact the gallery.  
All rights reserved. Artwork copyright © the photographers and artists.